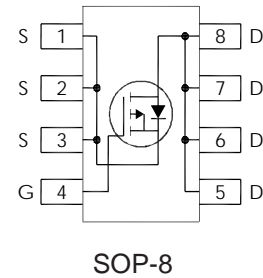


Applications

- Charge and Discharge Switch for Notebook PC Battery Application

Features

- $V_{DS} (V) = -30V$
- $I_D = -16A$ ($V_{GS} = -10V$)
- $R_{DS(ON)} < 6.6m\Omega$ ($V_{GS} = -10V$)
- $R_{DS(ON)} < 10.2 m\Omega$ ($V_{GS} = -4.5V$)



Features

Industry-Standard SO8 Package
RoHS Compliant Containing no Lead, no Bromide and no Halogen

Resulting Benefits

Multi-Vendor Compatibility
Environmentally Friendlier

Absolute Maximum Ratings

	Parameter	Max.	Units
V_{DS}	Drain-to-Source Voltage	-30	V
V	Gate-to-Source Voltage	± 20	
I @ $T_A = 25^\circ C$	Continuous Drain Current, $V_{GS} @ 10V$	-16	A
I @ $T_A = 70^\circ C$	Continuous Drain Current, $V_{GS} @ 10V$	-13	
I	Pulsed Drain Current ①	-130	
P @ $T_A = 25^\circ C$	Power Dissipation ②	2.5	W
P @ $T_A = 70^\circ C$	Power Dissipation ②	1.6	
	Linear Derating Factor	0.02	W/ $^\circ C$
T	Operating Junction and Storage Temperature Range	-55 to +150	$^\circ C$

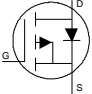
Static @ T_J = 25°C (unless otherwise specified)

	Parameter	Min.	Typ.	Max.	Units	Conditions
BV _{DSS}	Drain-to-Source Breakdown Voltage	-30			V	V _{GS} = 0V, I _D = -250μA
ΔBV _{DSS} /ΔT _J	Breakdown Voltage Temp. Coefficient		0.022		V/°C	Reference to 25°C, I _D = -1mA
R _{DS(on)}	Static Drain-to-Source On-Resistance		5.4	6.6	mΩ	V _{GS} = -10V, I _D = -16A ③
			8.3	10.2		V _{GS} = -4.5V, I _D = -13A ③
V _{GS(th)}	Gate Threshold Voltage	-1.3	-1.8	-2.4	V	V _{DS} = V _{GS} , I _D = -50μA
ΔV _{GS(th)}	Gate Threshold Voltage Coefficient		-5.7		mV/°C	
I _{DSS}	Drain-to-Source Leakage Current			-1.0	μA	V _{DS} = -24V, V _{GS} = 0V
				-150		V _{DS} = -24V, V _{GS} = 0V, T _J = 125°C
I _{GSS}	Gate-to-Source Forward Leakage			-100	nA	V _{GS} = -20V
	Gate-to-Source Reverse Leakage			100		V _{GS} = 20V
g _{fs}	Forward Transconductance	36			S	V _{DS} = -10V, I _D = -13A
Q _g	Total Gate Charge ⑥		31		nC	V _{DS} = -15V, V _{GS} = -4.5V, I _D = -13A
Q _g	Total Gate Charge ⑥		61	92	nC	V _{GS} = -10V
Q _{gs}	Gate-to-Source Charge ⑥		9			V _{DS} = -15V
Q _{gd}	Gate-to-Drain Charge ⑥		14			I _D = -13A
R _G	Gate Resistance ⑥		14		Ω	
t _{d(on)}	Turn-On Delay Time		19		ns	V _{DD} = -15V, V _{GS} = -4.5V ③
t _r	Rise Time		64			I _D = -1.0A
t _{d(off)}	Turn-Off Delay Time		160			R _G = 6.8Ω
t _f	Fall Time		120			See Figs. 20a & 20b
C _{iss}	Input Capacitance		2820		pF	V _{GS} = 0V
C _{oss}	Output Capacitance		640			V _{DS} = -15V
C _{rss}	Reverse Transfer Capacitance		370			f = 1.0MHz

Avalanche Characteristics

	Parameter	Typ.	Max.	Units
E _{AS}	Single Pulse Avalanche Energy ②		330	mJ
I _{AR}	Avalanche Current ①		-13	A

Diode Characteristics

	Parameter	Min.	Typ.	Max.	Units	Conditions
I _S	Continuous Source Current (Body Diode)			-2.5	A	MOSFET symbol showing the integral reverse p-n junction diode. 
I _{SM}	Pulsed Source Current (Body Diode) ①			-130		
V _{SD}	Diode Forward Voltage			-1.2	V	T _J = 25°C, I _S = -2.5A, V _{GS} = 0V ③
t _{rr}	Reverse Recovery Time		33	50	ns	T _J = 25°C, I _F = -2.5A, V _{DD} = -24V
Q _{rr}	Reverse Recovery Charge		30	45	nC	di/dt = 100A/μs ③

Thermal Resistance

	Parameter	Typ.	Max.	Units
R _{θJL}	Junction-to-Drain Lead ⑤		20	°C/W
R _{θJA}	Junction-to-Ambient ④		50	

Notes:

- ① Repetitive rating; pulse width limited by max. junction temperature.
- ② Starting T_J = 25°C, L = 4.3mH, R_G = 25Ω, I_{AS} = -13A.
- ③ Pulse width ≤ 400μs; duty cycle ≤ 2%.
- ④ When mounted on 1 inch square copper board.
- ⑤ R_θ is measured at T_J of approximately 90°C.

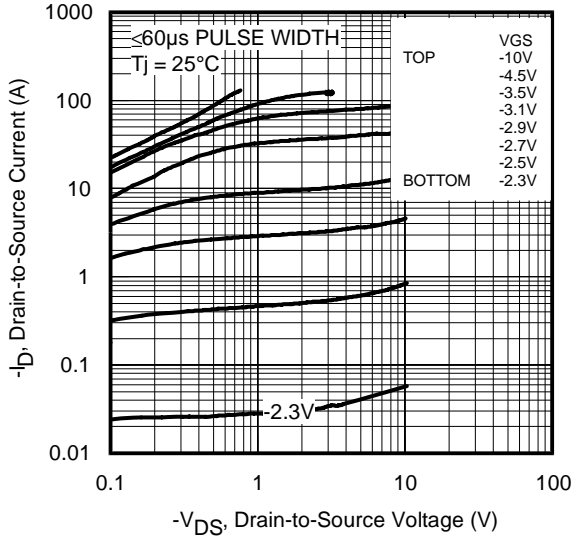


Fig 1. Typical Output Characteristics

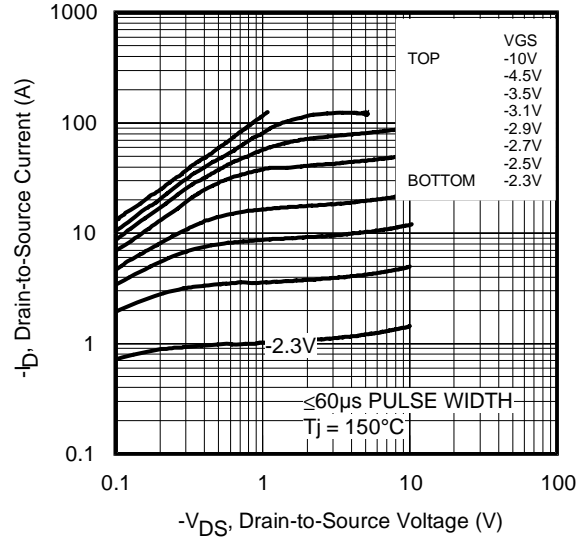


Fig 2. Typical Output Characteristics

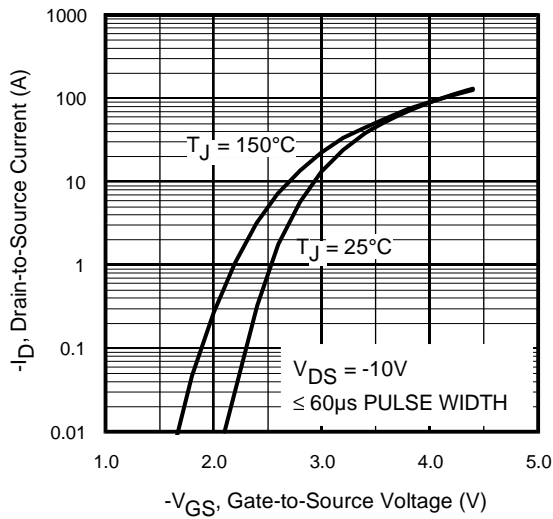


Fig 3. Typical Transfer Characteristics

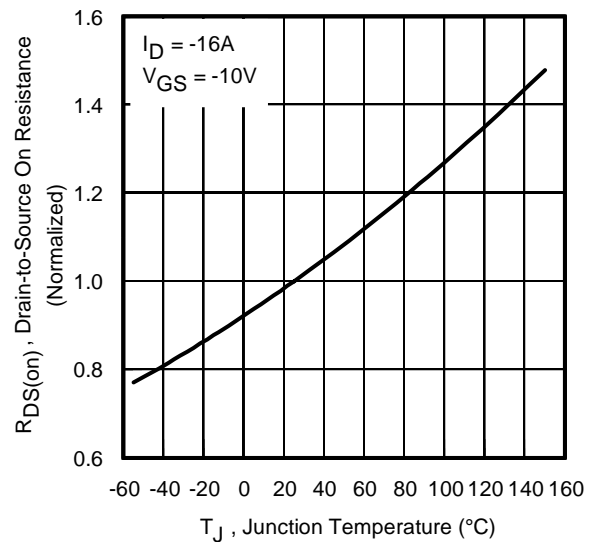


Fig 4. Normalized On-Resistance vs. Temperature

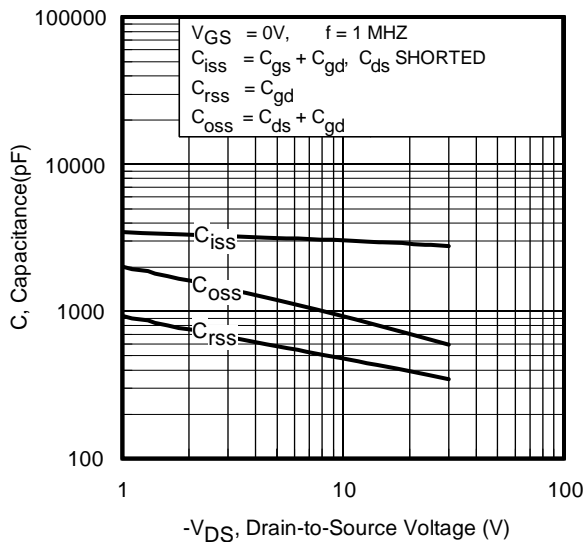


Fig 5. Typical Capacitance vs. Drain-to-Source Voltage

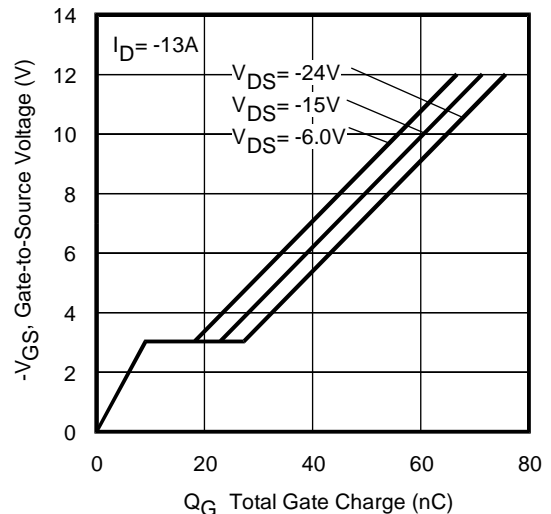


Fig 6. Typical Gate Charge vs. Gate-to-Source Voltage

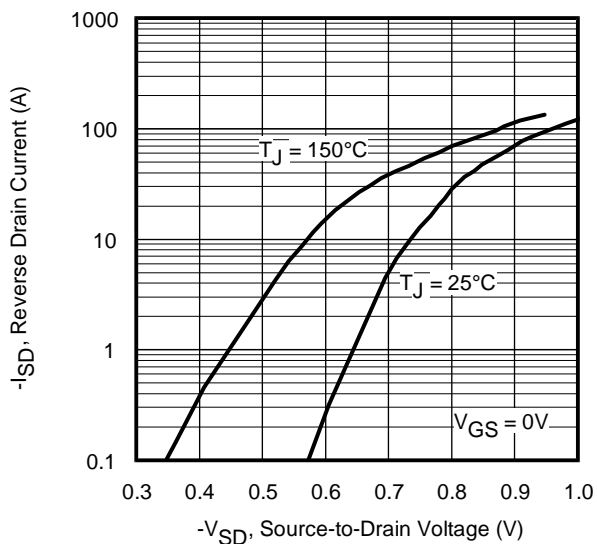


Fig 7. Typical Source-Drain Diode Forward Voltage

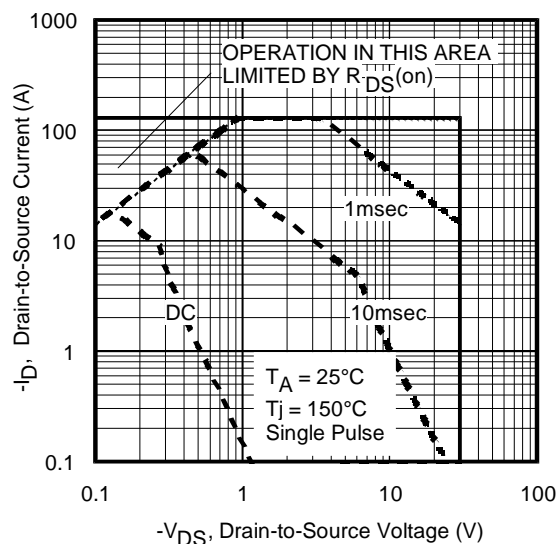


Fig 8. Maximum Safe Operating Area

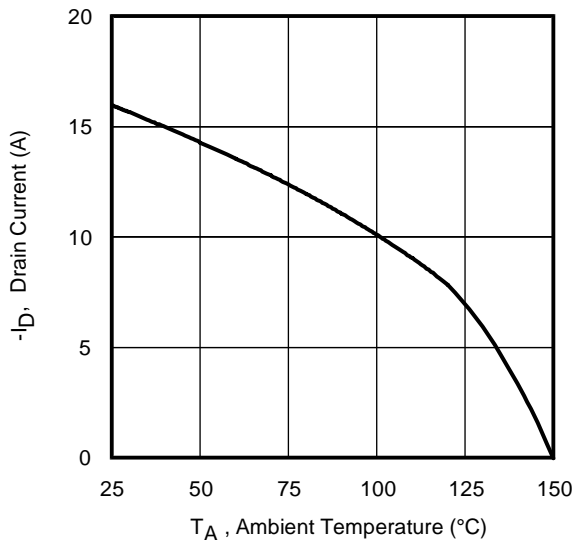


Fig 9. Maximum Drain Current vs. Ambient Temperature

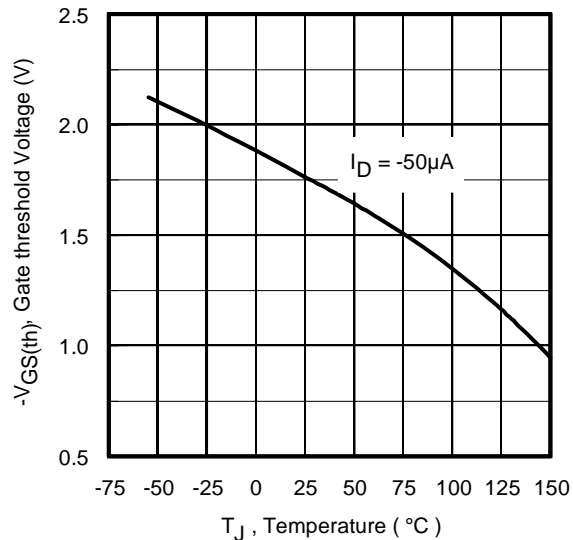


Fig 10. Threshold Voltage vs. Temperature

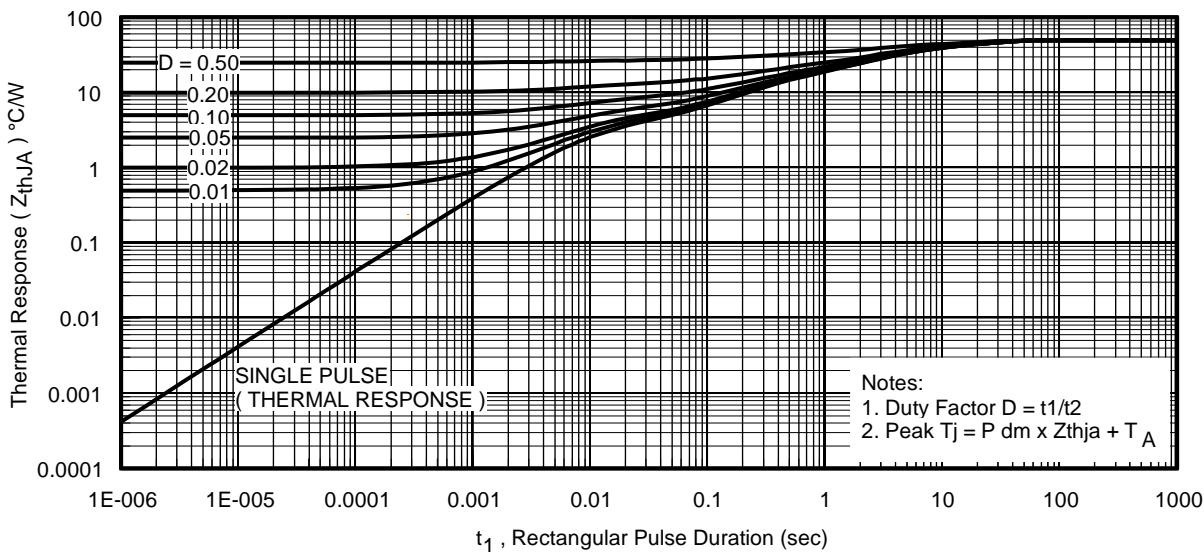


Fig 11. Maximum Effective Transient Thermal Impedance, Junction-to-Ambient

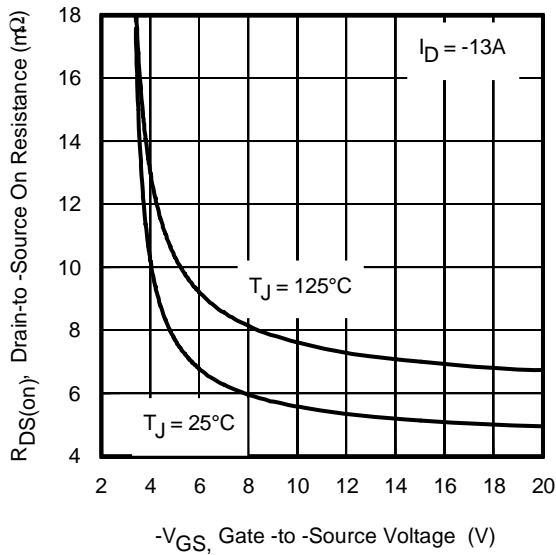


Fig 12. On-Resistance vs. Gate Voltage

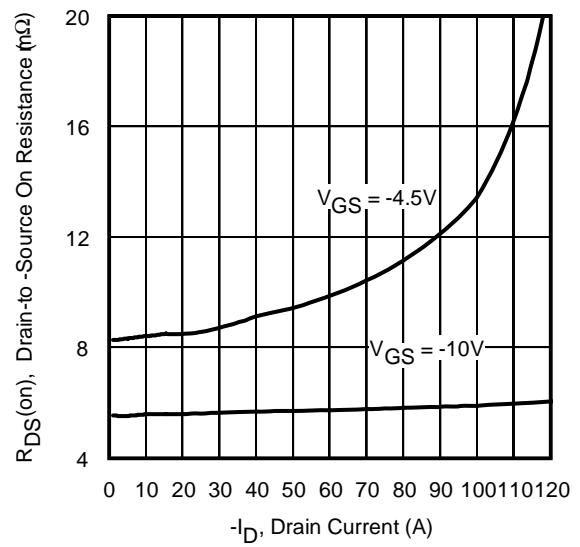


Fig 13. Typical On-Resistance vs. Drain Current

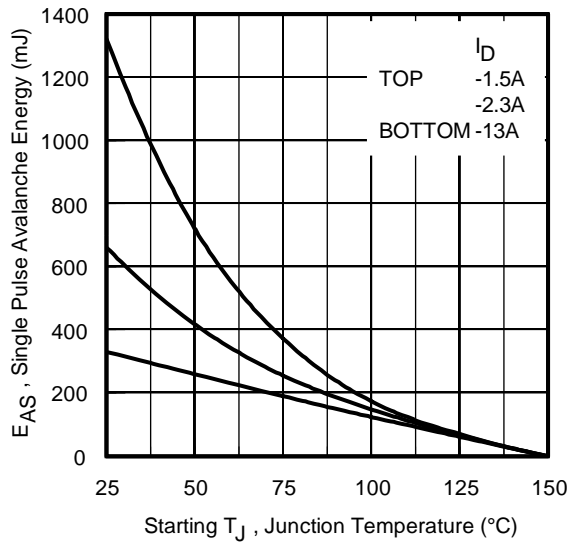


Fig 14. Maximum Avalanche Energy vs. Drain Current

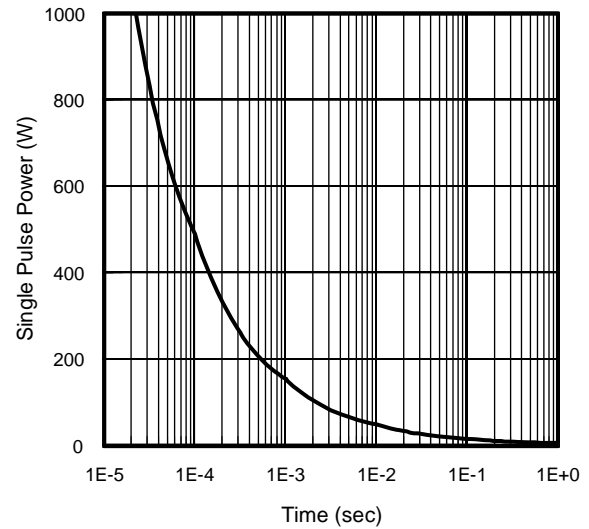


Fig 16. Typical Power vs. Time

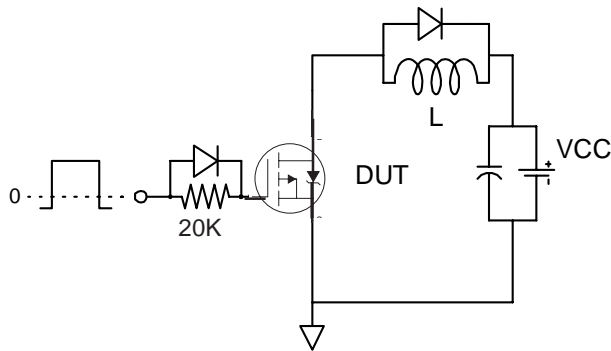


Fig 17a. Gate Charge Test Circuit

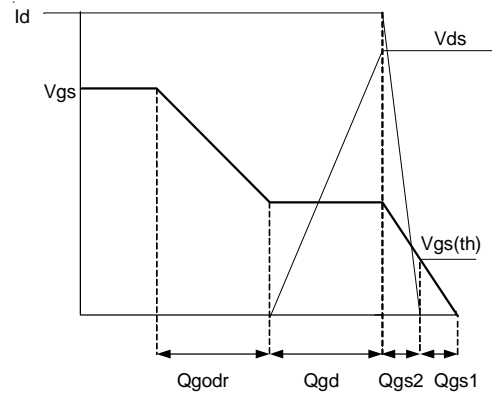


Fig 17b. Gate Charge Waveform

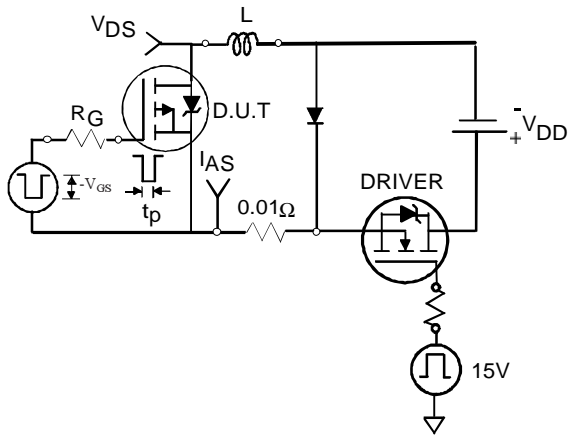


Fig 18a. Unclamped Inductive Test Circuit

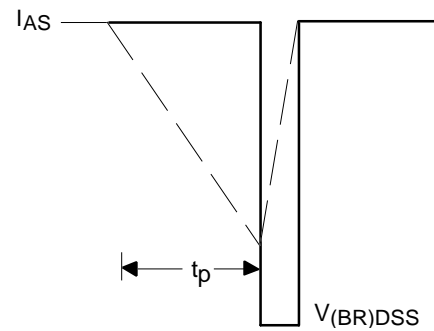


Fig 18b. Unclamped Inductive Waveforms

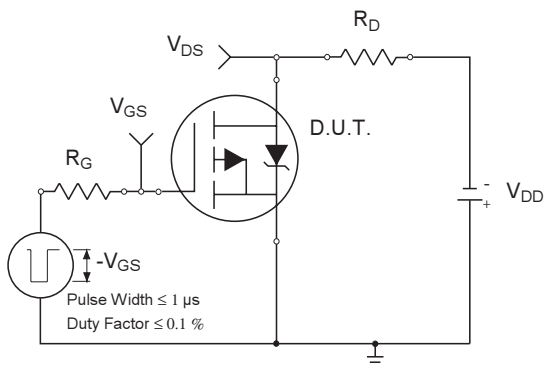


Fig 19a. Switching Time Test Circuit

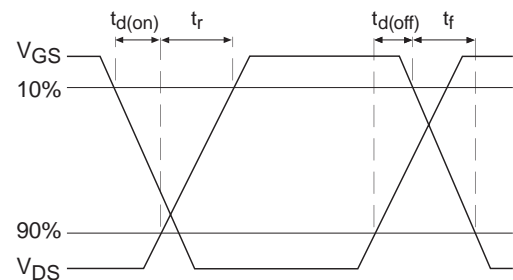
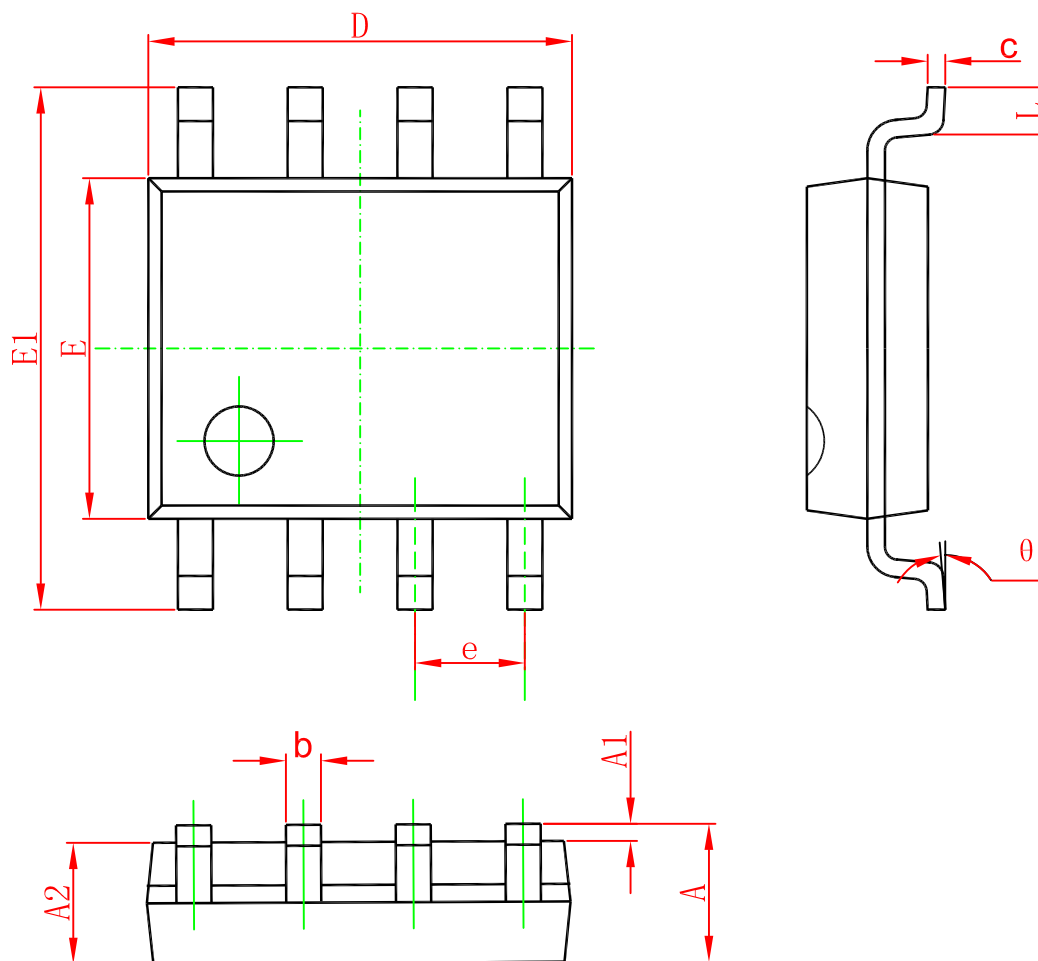


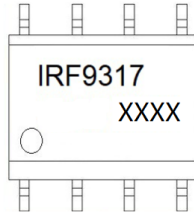
Fig 19b. Switching Time Waveforms

Package Mechanical Data SOP-8



Symbol	Dimensions In Millimeters		Dimensions In Inches	
	Min	Max	Min	Max
A	1.350	1.750	0.053	0.069
A1	0.100	0.250	0.004	0.010
A2	1.350	1.550	0.053	0.061
b	0.330	0.510	0.013	0.020
c	0.170	0.250	0.006	0.010
D	4.700	5.100	0.185	0.200
E	3.800	4.000	0.150	0.157
E1	5.800	6.200	0.228	0.244
e	1.270(BSC)		0.050(BSC)	
L	0.400	1.270	0.016	0.050
theta	0°	8°	0°	8°

Marking



Ordering information

Order code	Package	Baseqty	Deliverymode
IRF9317	SOP-8	3000	Tape and reel