

EVVOSEMI[®]

THINK CHANGE DO



ESD



TVS



MOS



LDO



Diode



Sensor



DC-DC

Product Specification

▶ Domestic	Part Number	ULN2803A
▶ Overseas	Part Number	ULN2803A-EV
▶ Equivalent	Part Number	ULN2803A

EV is the abbreviation of name EVVO

DARLINGTON ARRAY DRIVER IC

DESCRIPTION

The ULN2803 is high-voltage, high-current darlington driver IC composed of 8 NPN darlington pairs. All units share the emitter in common, and each unit adopts open-collector output. A 2.7KΩ resistor is connected to each darlington pair in serial, which is compatible with TTL and 5V CMOS for data processing without logic buffer.

Sink current of ULN2803 is up to 500mA, when it is off state, the withstand voltage is 50V and the output can runs with high load current, which provides solutions for various interface.

FEATURES

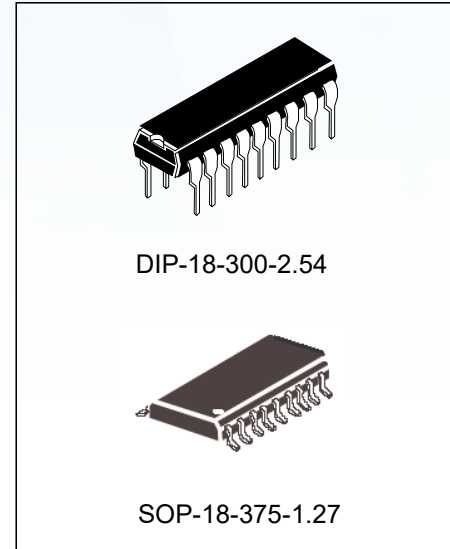
- ◆ Wide operating voltage range
- ◆ 8-ch high-gain darlington array
- ◆ High output voltage (up to 50V)
- ◆ High output current (up to 500mA)
- ◆ Able to connect to TTL, CMOS, PMOS directly
- ◆ Clamp diodes for switching inductive loads

APPLICATIONS

- ◆ Relay driver
- ◆ DC lamp driver
- ◆ Step motor driver
- ◆ Magnet valve
- ◆ DC brushless motor driver

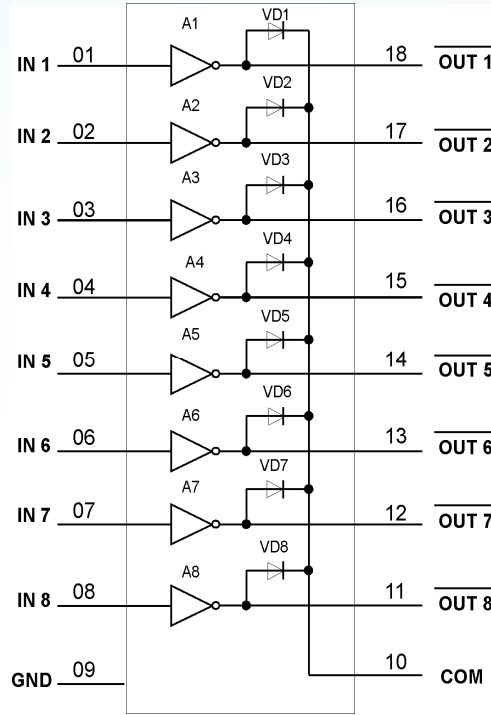
ORDERING INFORMATION

Part No.	Package	Marking	Hazardous Substance Control	Packing Type
ULN2803AN	DIP-18-300-2.54	ULN2803AN	Halogen free	Tube
ULN2803A	SOP-18-375-1.27	ULN2803A	Halogen free	Tape&Reel



DARLINGTON ARRAY DRIVER IC

BOLBK DIAGRAM



Pin		I/O	Description
Pin name	Pin		
<1:8>	1-8	Input	Channel 1~8 darlington input
<11:18>	18-11	Output	Channel 1~8 darlington output
(GND)	9	GND	Ground
COM	10	Input/ Output	Positive of clamp diode (used with inductive load)

ABSOLUTE MAXIMUM RATINGS

Parameter	Symbol	Ratings	Units
Input Voltage	V_{IN}	-0.5~30	V
Output Voltage	V_{OUT}	-0.5~50	V
Clamp Diode Reverse Voltage	V_R	55	V
Output Current	I_{OUT}	500	mA
Clamp Diode Forward Current	I_F	25	mA
Storage Temperature	T_{STG}	-55~150	°C
Operating Temperature	T_{OPR}	-40~85	°C
Operating Junction Temperature	T_J	-40~150	°C

DARLINGTON ARRAY DRIVER IC

ELECTRICAL CHARACTERISTICS (Ta = 25 °C UNLESS OTHERWISE NOTED)

Parameter	Symbol	Test conditions	Min.	Typ.	Max.	Units
Output Leakage Current	I _{CEX}	T _A =25°C, V _{CE} =50V(Figure 1)	--	--	20	uA
		T _A =85°C, V _{CE} =50V(Figure 1)	--	--	100	
CE Saturation Voltage	V _{CE(sat)}	I _{OUT} =350mA, I _{IN} =500 uA(Figure 3)	--	1.3	1.6	V
		I _{OUT} =250mA, I _{IN} =350 uA(Figure 3)	--	1.1	1.3	
		I _{OUT} =100mA, I _{IN} =250 uA(Figure 3)	--	0.9	1.1	
Input Current (Output On)	I _{I(ON)}	V _I =3.85V(Figure 4)	--	0.93	1.35	mA
Input Current (Output Off)	I _{I(OFF)}	T _A =+25°C, I _C =500uA(Figure 5)	50	100	--	uA
		T _A =+85°C, I _C =500uA(Figure 5)	25	50	--	
Input Voltage (Output On)	V _{I(ON)}	V _{CE} =2.0V, I _C =200mA(Figure 6)	--	--	2.4	V
		V _{CE} =2.0V, I _C =250mA(Figure 6)	--	--	2.7	
		V _{CE} =2.0V, I _C =300mA(Figure 6)	--	--	3.0	
Input Capacitance	C _I		--	15	30	pF
Turn-on Delay	t _{MH}	0.5V _I to 0.5 V _O	--	--	1.0	μS
Turn-off Delay	t _{ML}	0.5V _I to 0.5 V _O	--	--	1.0	
Clamp Diode Reverse Current	I _R		--	--	--	μA
		T _A =+25°C, V _R =50V(Figure 7)	--	--	10	
		T _A =+85°C, V _R =50V(Figure 7)	--	--	50	
Clamp Diode Forward Voltage	V _F	I _F =350mA(Figure 8)	--	1.7	2.0	V

Notes: 1. Absolute maximum ratings are those values beyond which the device could be permanently damaged.

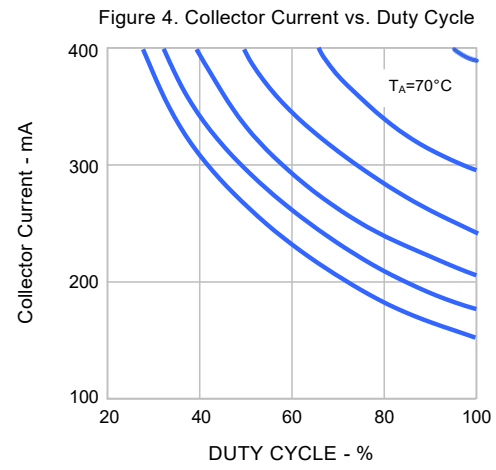
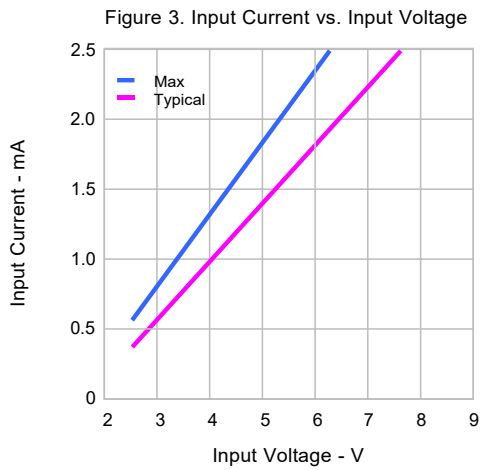
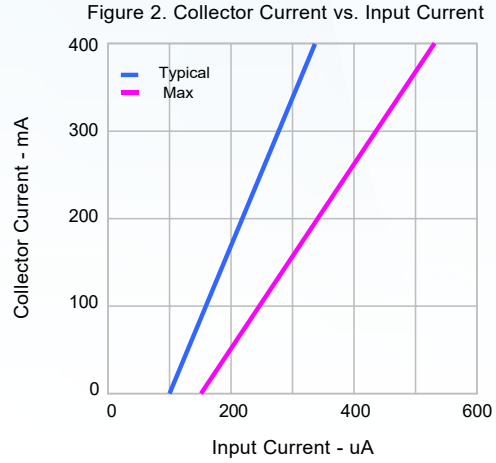
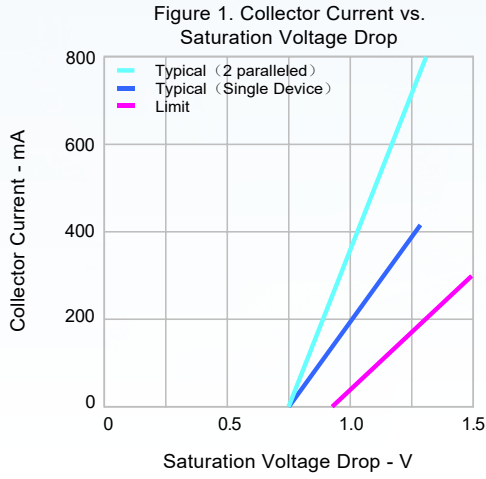
Absolute maximum ratings are stress ratings only and functional device operation is not implied. Electrical Characteristics are for normal operating range;

2. All the conditions are suitable for darlington pairs unless otherwise noted;

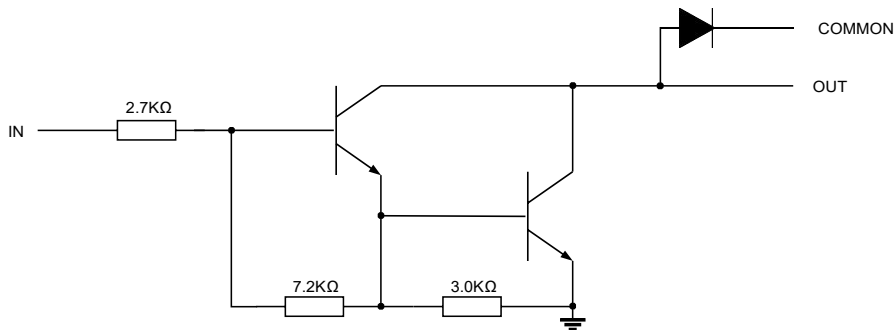
3. In general, with 70°C, V_{CE} (Sat)= 1.6V, pulse width=20ms, the continuous operating current of each channel is 350mA.

DARLINGTON ARRAY DRIVER IC

TYPICAL CHARACTERISTIC CURVES



INTERNAL EQUIVALENT CIRCUIT



TEST CIRCUITS

DARLINGTON ARRAY DRIVER IC

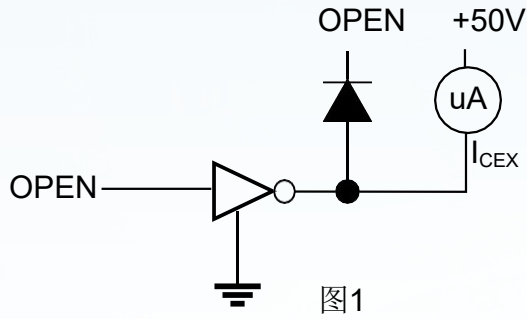


图1

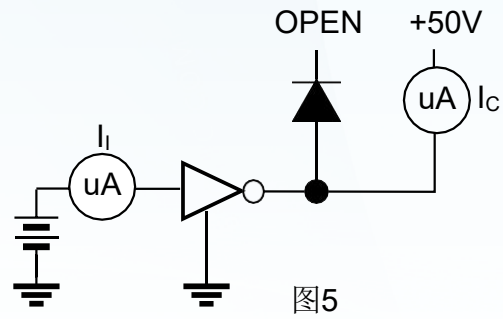


图5

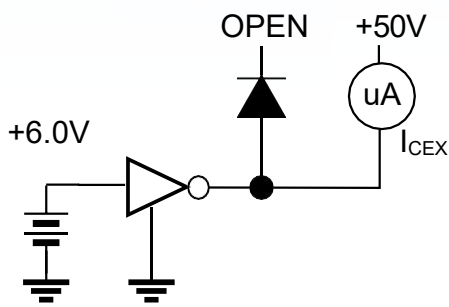


图2

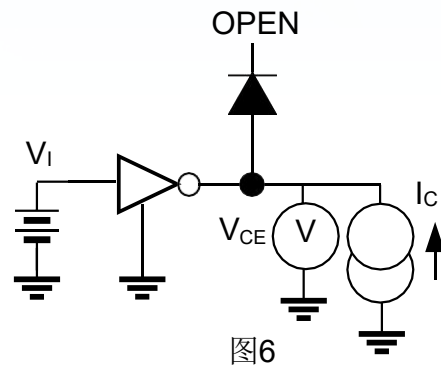


图6

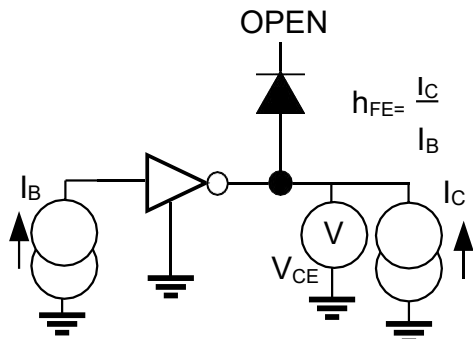


图3

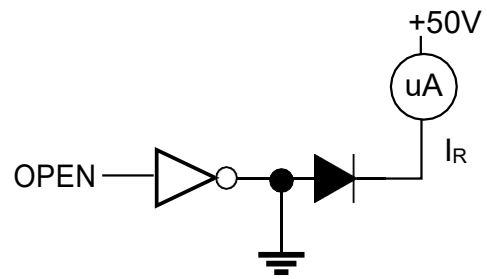


图7

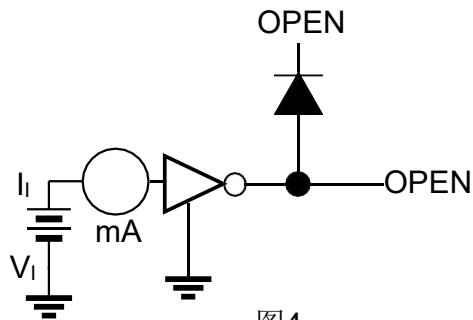


图4

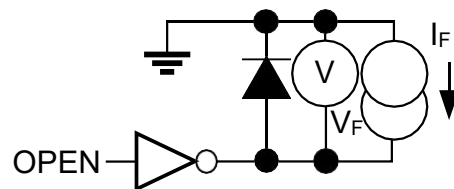
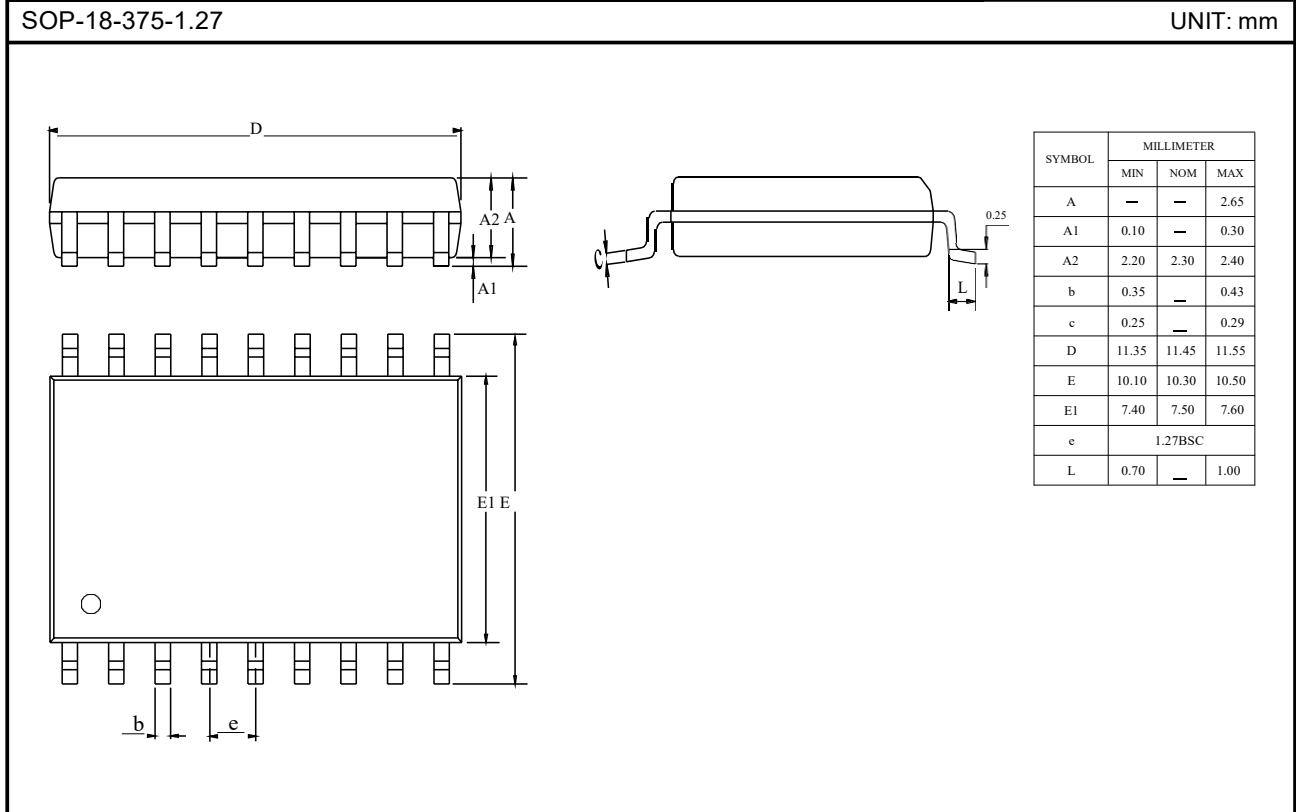
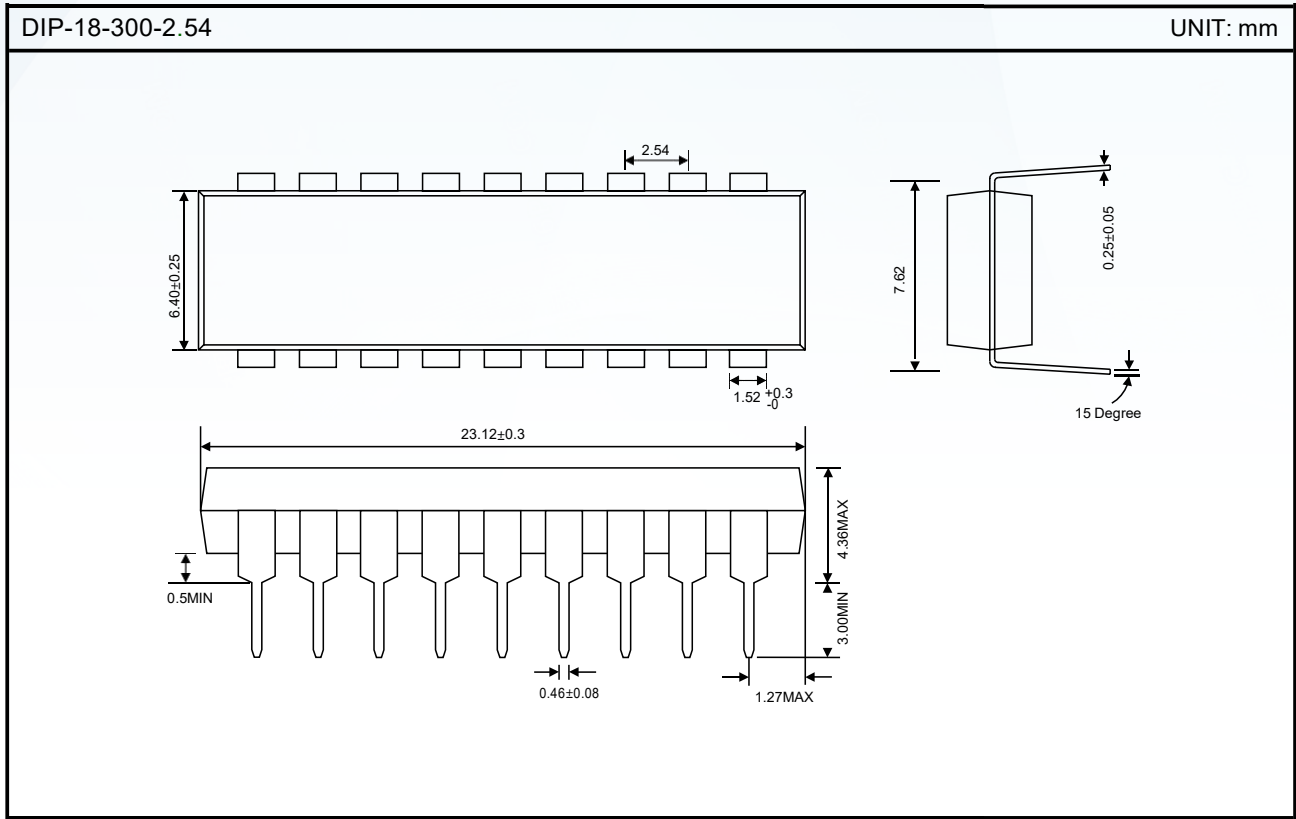


图8

PACKAGE OUTLINE

DARLINGTON ARRAY DRIVER IC



Disclaimer

EVVOSEMI ("EVVO") reserves the right to make corrections, enhancements, improvements, and other changes to its products and services at any time, and to discontinue any product or service without notice.

EVVO warrants the performance of its hardware products to the specifications applicable at the time of sale in accordance with its standard warranty. Testing and other quality control techniques are used as deemed necessary by EVVO to support this warranty. Except where mandated by government requirements, testing of all parameters of each product is not necessarily performed.

Customers should obtain and confirm the latest product information and specifications before final design, purchase, or use. EVVO makes no warranty, representation, or guarantee regarding the suitability of its products for any particular purpose, nor does EVVO assume any liability for application assistance or customer product design. EVVO does not warrant or accept any liability for products that are purchased or used for any unintended or unauthorized application.

EVVO products are not authorized for use as critical components in life support devices or systems without the express written approval of EVVOSEMI.

The EVVO logo and EVVOSEMI are trademarks of EVVOSEMI or its subsidiaries in relevant jurisdictions. EVVO reserves the right to make changes without further notice to any products herein.