

EVVOSEMI[®]

THINK CHANGE DO



ESD



TVS



MOS



LDO



Diode



Sensor



DC-DC

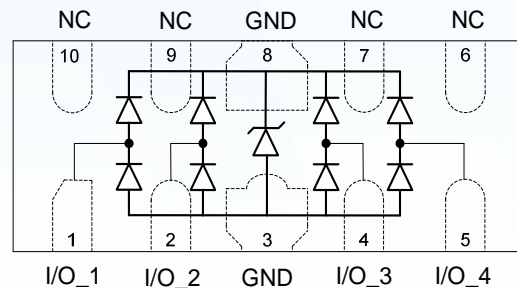
Product Specification

▶ Domestic	Part Number	ESD0524P
▶ Overseas	Part Number	ESD0524P
▶ Equivalent	Part Number	ESD0524P

EV is the abbreviation of name EVVO

FEATURES

- Ultra low capacitance: 0.3pF typical (I/O to I/O)
- Ultra low leakage: nA level
- Low operating voltage: 5V
- Low clamping voltage
- Up to 4 data lines and one power line protects
- Complies with following standards
 - IEC 61000-4-2 (ESD) immunity test
 - Air discharge:±25kv
 - Contact discharge: ±20kv
 - IEC 61000-4-4(EFT)40A(5/50ns)
 - IEC 61000-4-5(Lighning): 4A (8/20µs)
- ROHS Compliant



4-Line Protection

APPLICATIONS

- Serial ATA
- PCI Express
- MDDI Ports
- Display Ports
- High Definition Multi-Media Interface (HDMI)
- Digital Visual Interface (DVI)

MACHANICAL DATA

- DFN2510 package
- Flammability Rating: UL 94V-0
- Terminal: Matte tin plated.
- High temperature soldering guaranteed:260°C/10s
- Reel size: 7 inch

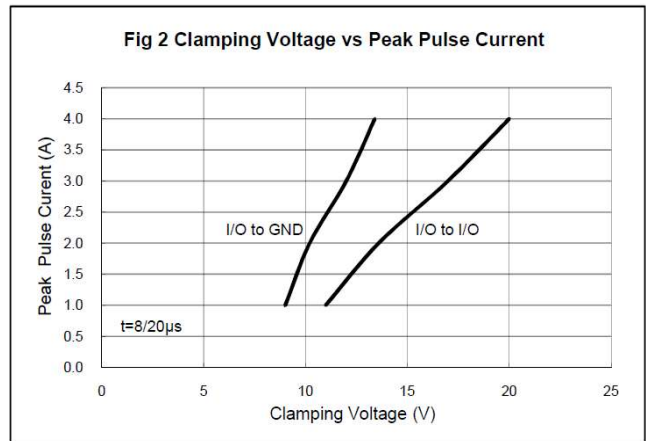
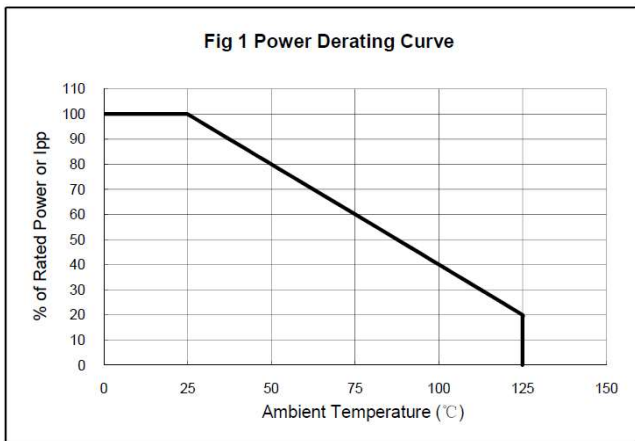
ABSOLUTE MAXIMUM RATING

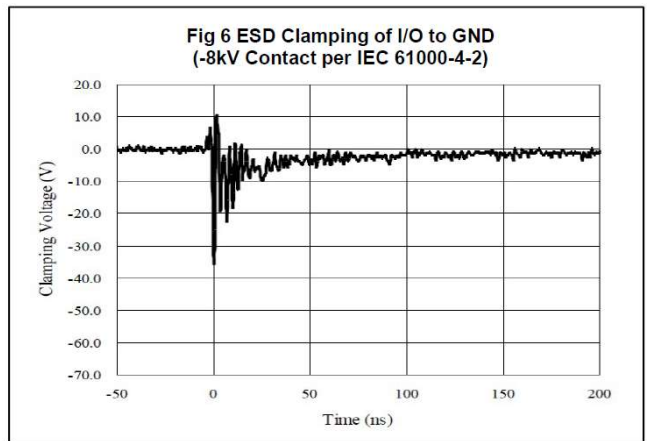
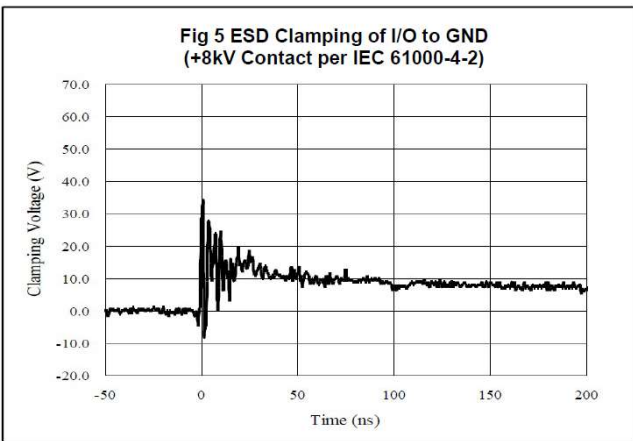
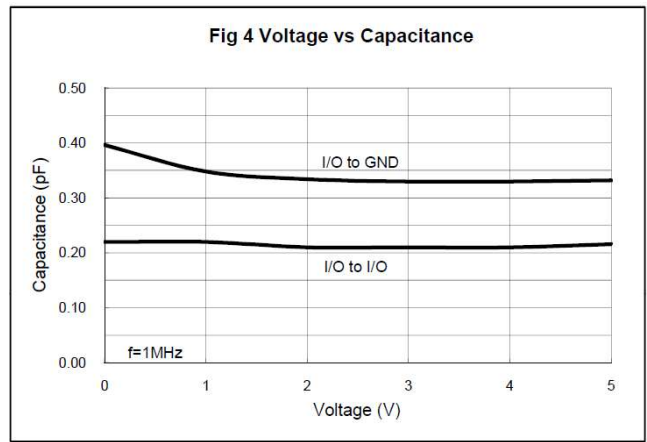
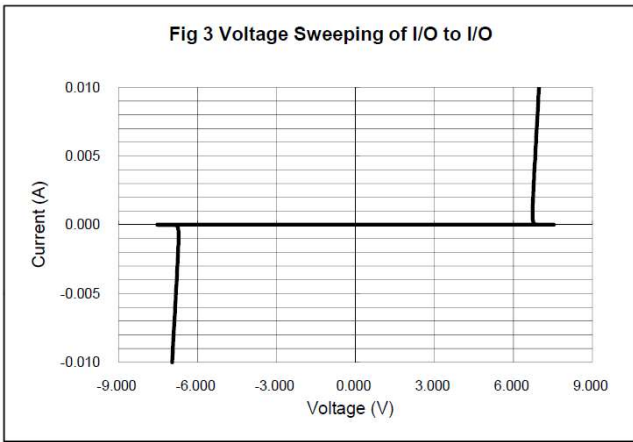
Symbol	Parameter	Value	Units
P _{PP}	Peak Pulse Power (8/20µs)	80	W
I _{PP}	Peak Pulse Current (8/20µs)	4	A
V _{ESD}	ESD per IEC 61000-4-2 (Air) ESD per IEC 61000-4-2 (Contact)	±25 ±20	kV
T _{OPT}	Operating Temperature	-55/+125	°C
T _{STG}	Storage Temperature	-55/+150	°C

ELECTRICAL CHARACTERISTICS (Tamb=25 °C)

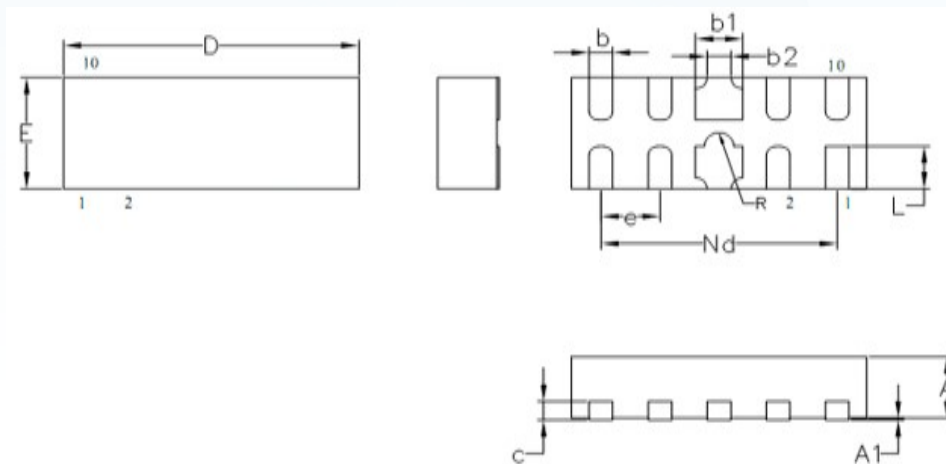
Symbol	Parameter	Test Condition	Min	Typ	Max	Units
V _{RWM}	Reverse Working Voltage	Any I/O pin to ground			5.0	V
V _{BR}	Reverse Breakdown Voltage	I _T = 1mA Any I/O pin to ground	7.0	8.0	9.5	V
I _R	Reverse Leakage Current	V _{RWM} = 5V Any I/O pin to ground			0.1	μA
V _C	Clamping Voltage	I _{PP} = 1A, t _p = 8/20μs Any I/O pin to ground			9	V
V _C	Clamping Voltage	I _{PP} = 4A, t _p = 8/20μs Any I/O pin to ground			16	V
C _J	Junction Capacitance	V _R = 0V, f = 1MHz Between I/O pins		0.3	0.4	pF
C _J	Junction Capacitance	V _R = 0V, f = 1MHz Between I/O pin to ground			0.8	pF

ELECTRICAL CHARACTERISTICS CURVE



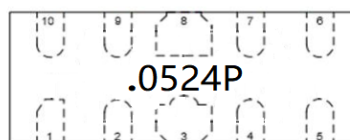


DFN2510 PACKAGE OUTLINE DIMENSIONS



Symbol	Dimensions (mm)		
	Min.	Nom.	Max.
D	2.45	2.50	2.55
E	0.95	1.00	1.05
b1	0.35	0.40	0.45
b2	0.20REF		
b	0.15	0.20	0.25
L	0.33	0.38	0.43
Nd	2.00BSC		
e	0.50BSC		
R	0.10	0.125	0.15
A	0.45	0.50	0.55
c	0.15REF		
A1	0.00	-	0.05

Marking



Ordering information

Order code	Package	Base qty	Delivery mode
ESD0524P	DFN2510	3000	Tape and reel

Disclaimer

EVVOSEMI ("EVVO") reserves the right to make corrections, enhancements, improvements, and other changes to its products and services at any time, and to discontinue any product or service without notice.

EVVO warrants the performance of its hardware products to the specifications applicable at the time of sale in accordance with its standard warranty. Testing and other quality control techniques are used as deemed necessary by EVVO to support this warranty. Except where mandated by government requirements, testing of all parameters of each product is not necessarily performed.

Customers should obtain and confirm the latest product information and specifications before final design, purchase, or use. EVVO makes no warranty, representation, or guarantee regarding the suitability of its products for any particular purpose, nor does EVVO assume any liability for application assistance or customer product design. EVVO does not warrant or accept any liability for products that are purchased or used for any unintended or unauthorized application.

EVVO products are not authorized for use as critical components in life support devices or systems without the express written approval of EVVOSEMI.

The EVVO logo and EVVOSEMI are trademarks of EVVOSEMI or its subsidiaries in relevant jurisdictions. EVVO reserves the right to make changes without further notice to any products herein.